

The logo for Sitra, consisting of the word "SITRA" in a bold, white, sans-serif font on a dark purple rectangular background.

SITRA

Country development, strategy, long-term thinking,
good governance – the lessons from Finland through
Sitra model

CEU (Central European University) in Budapest
21th of May, 2012, Mikko Kosonen

Suomen itsenäisyyden juhlarahasto Sitra

Sitra in a nutshell

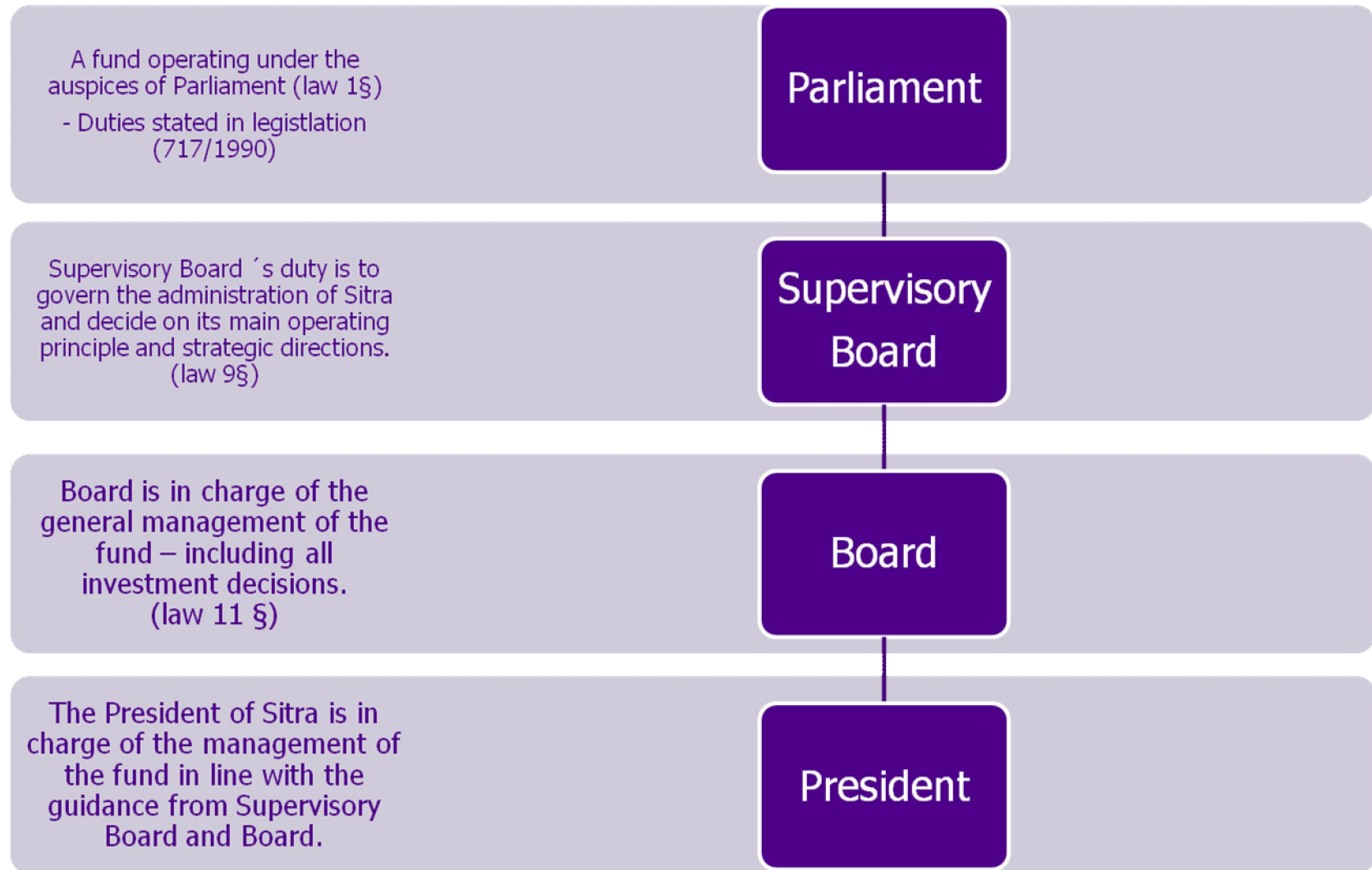


An independent public fund under the supervision of the Finnish Parliament; responsibilities stipulated in law

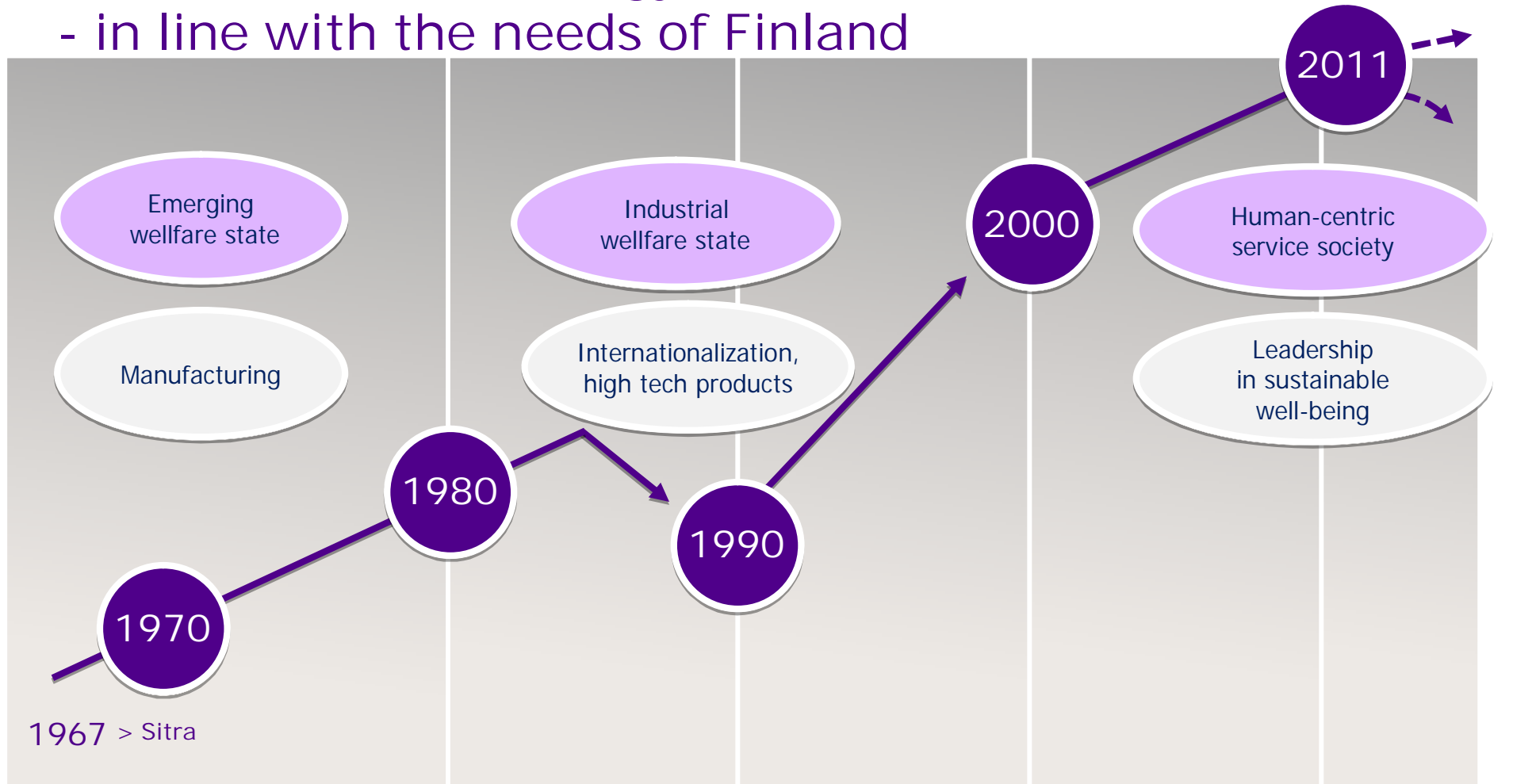
Sitra promotes:

- Stable and balanced development
 - Qualitative and quantitative economic growth
 - International competitiveness and co-operation
-
- Established in 1967
 - Endowment capital appr. 650 Meuro
 - Annual budget approximately 40 Meuro
 - Approximately 115 employees

Governance Principle & Bodies



Sitra's role and strategy has evolved over the times - in line with the needs of Finland



TECHNOLOGY DEVELOPER

VENTURE CAPITALIST

SOCIETAL CHANGE AGENT

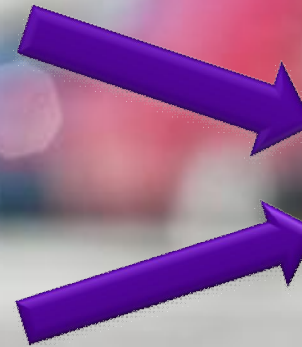
SITRA

Up until now, Finland has been one of the major winners from globalisation

Progressive industrial and innovation policies



Progressive social and education policies

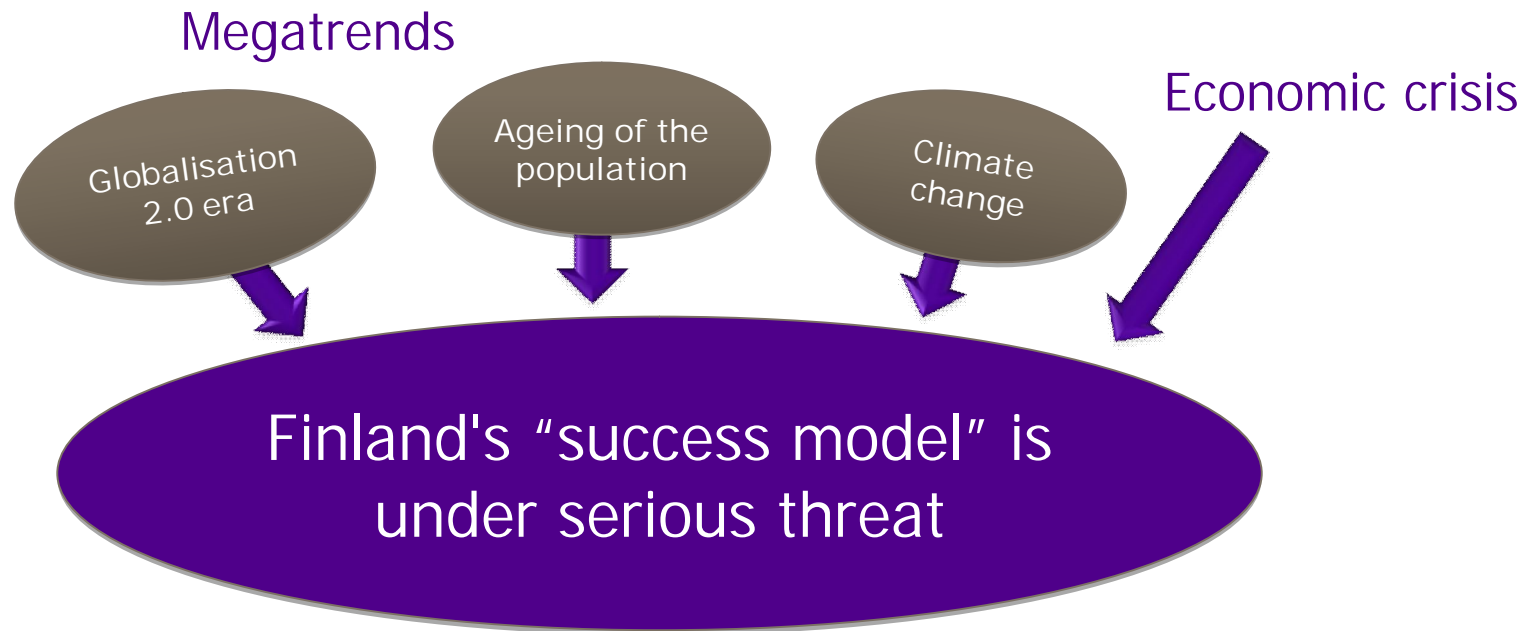


Balanced development
of Economic growth
and
Social justice

= FINLAND'S
SUCCESS MODEL

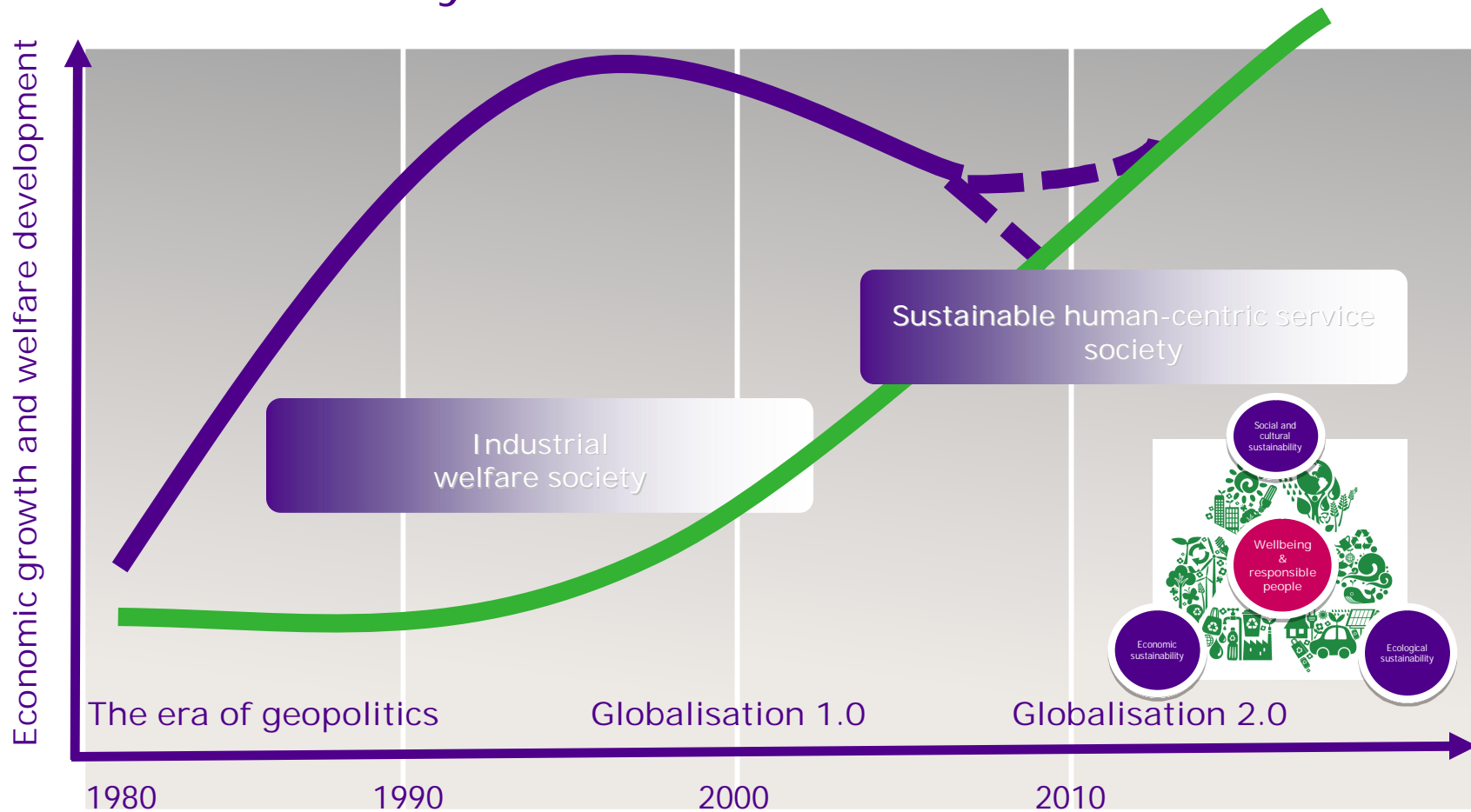


But the world is changing rapidly...

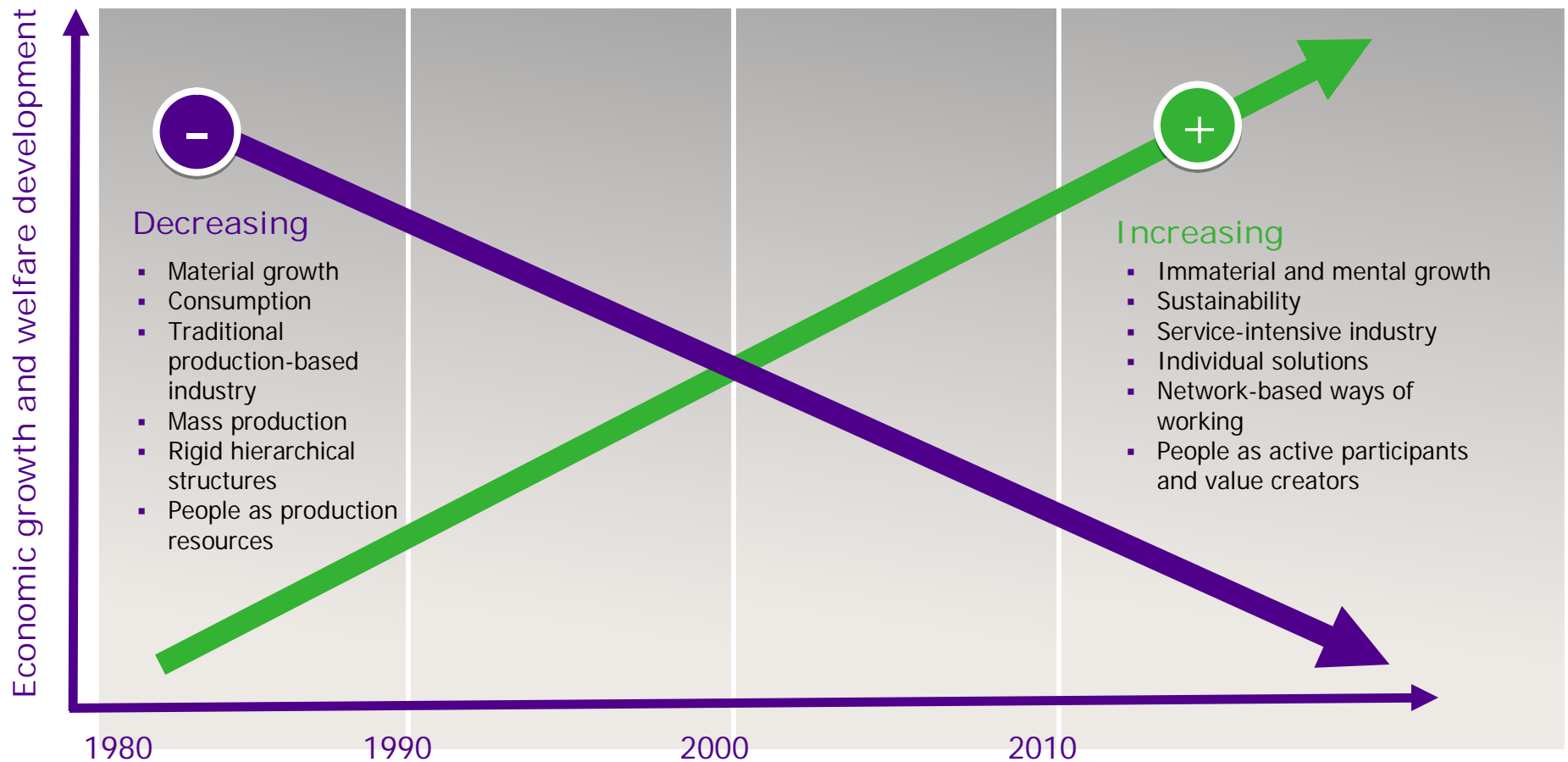


- Finland's traditional industrial structure is rapidly weakening
 - Our dependency ratio is becoming rapidly distorted
- Major need and opportunity for structural changes

Current challenge: transition from an industrial welfare society to sustainable, human centric service society



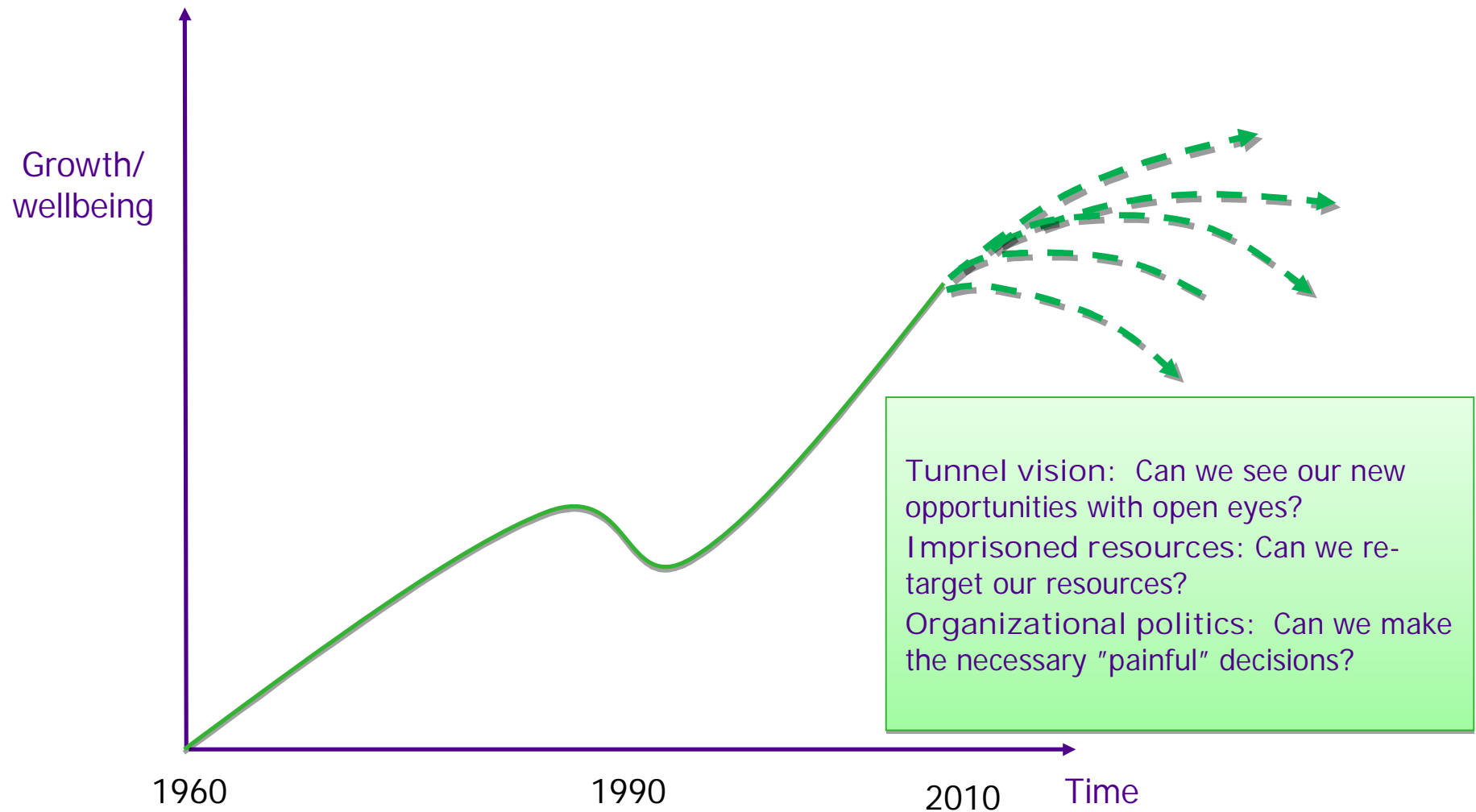
Towards a human-centric service economy



A paradigm shift in value creation and leadership



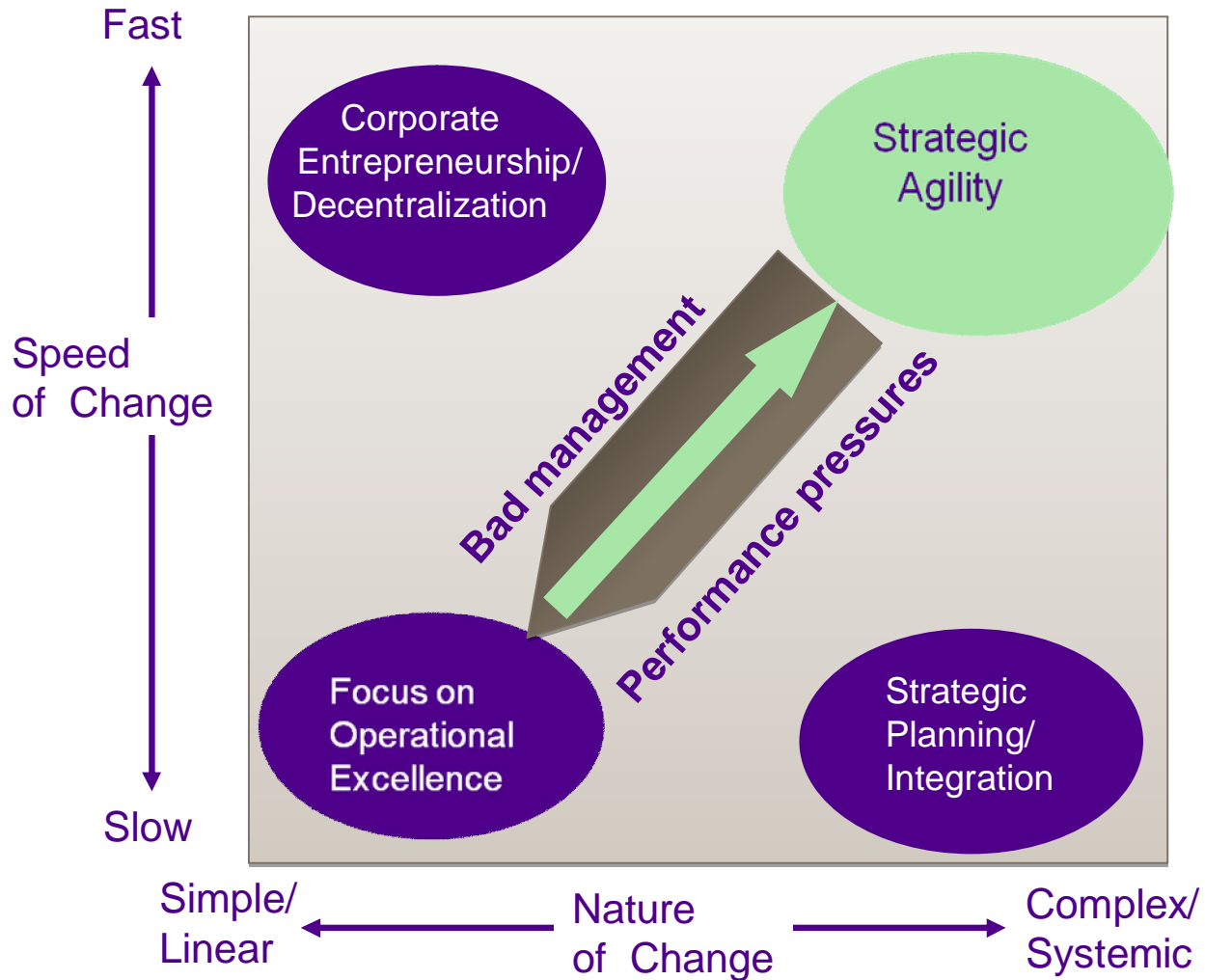
Has Finland become prisoner of our own success?



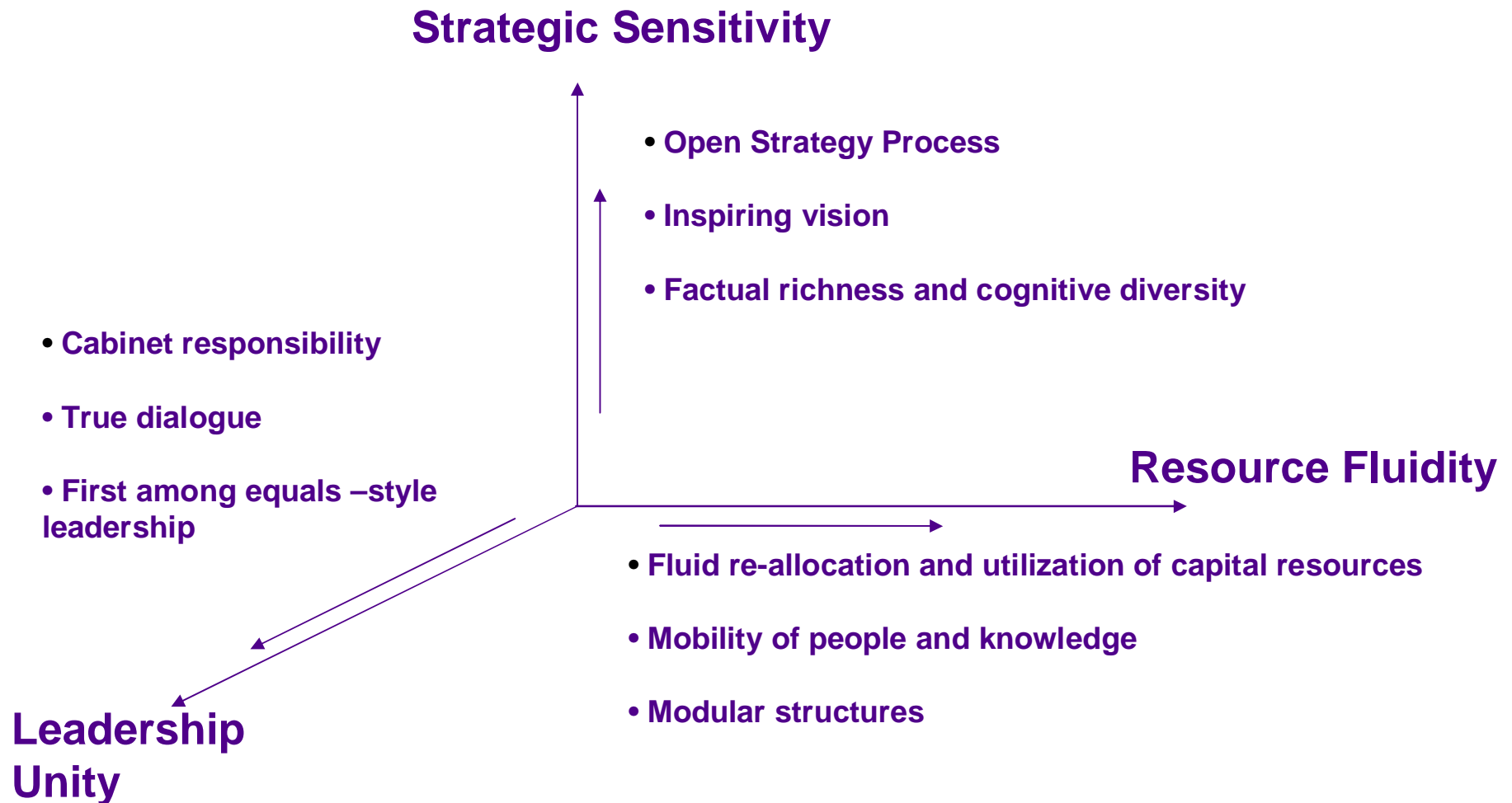
Strategic Agility imperative

*Most organizations (and countries) die not because they do the **wrong things**, but because they keep doing what used to be the **right things for too long...***

Why Strategic Agility Now? Why so hard ?



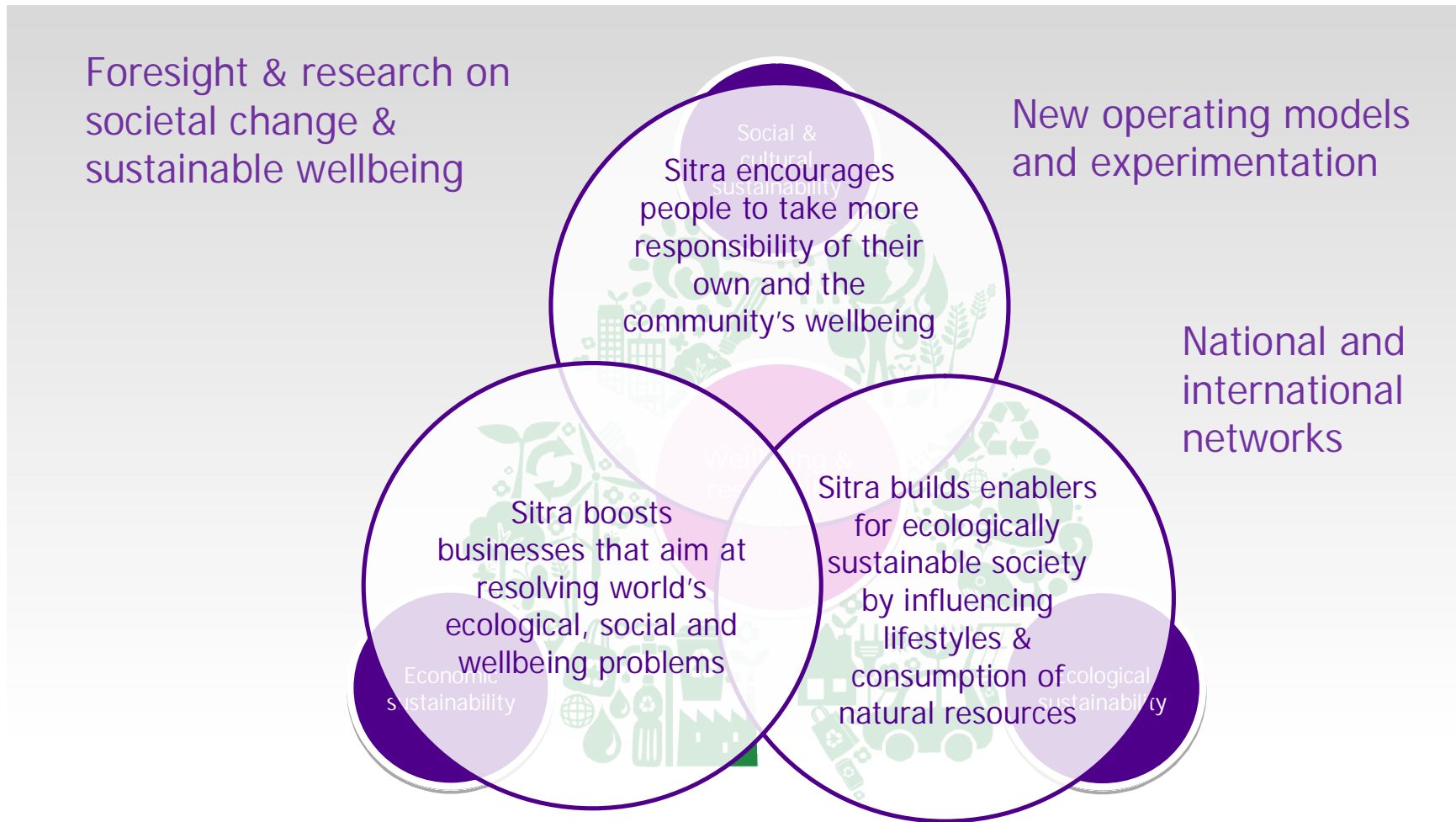
Sitra helps Finland to be more strategically agile



Sitra's Vision: Finland succeeds as a global pioneer in sustainable well-being



Sitra's goals (what and how?)

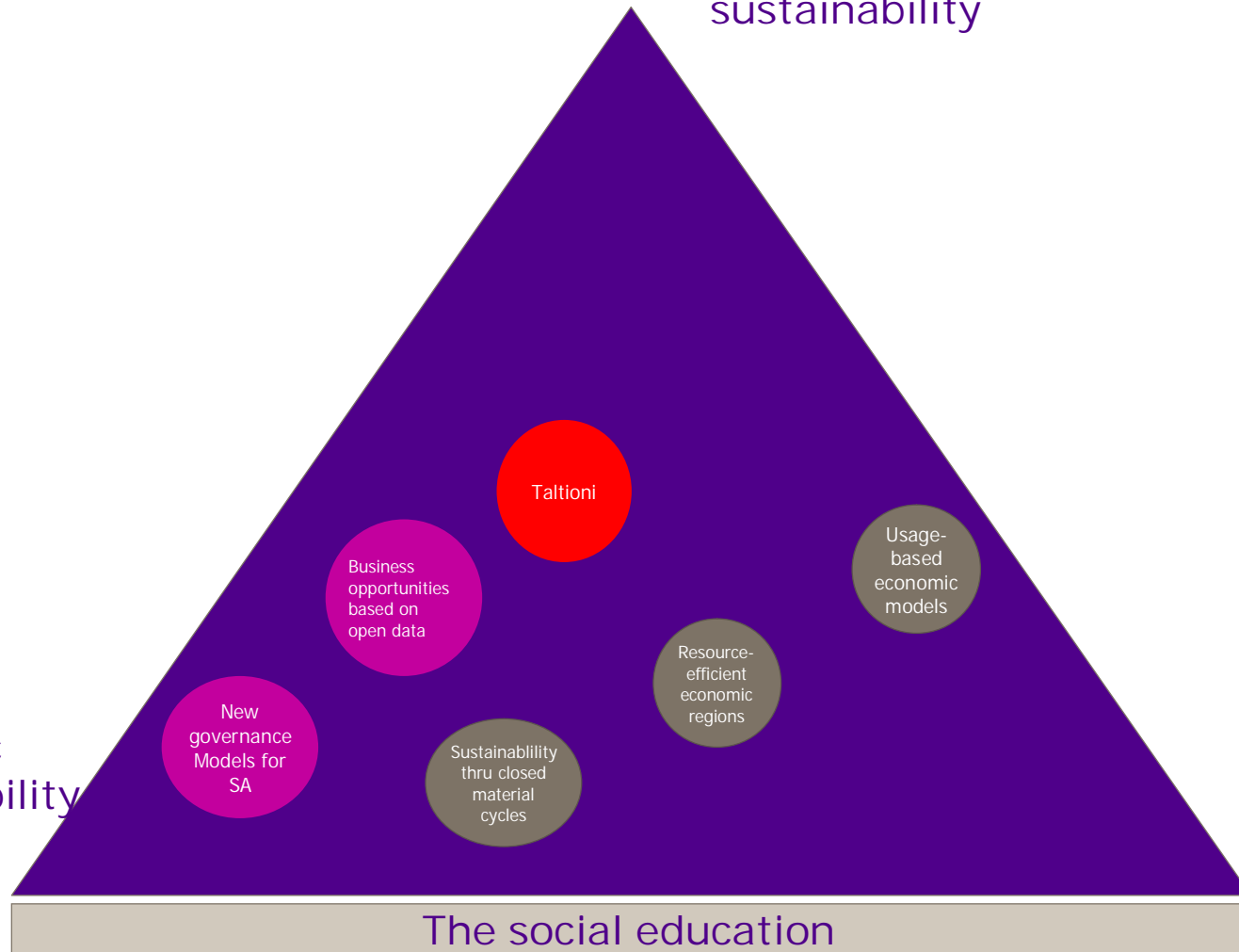


Sitra's key projects

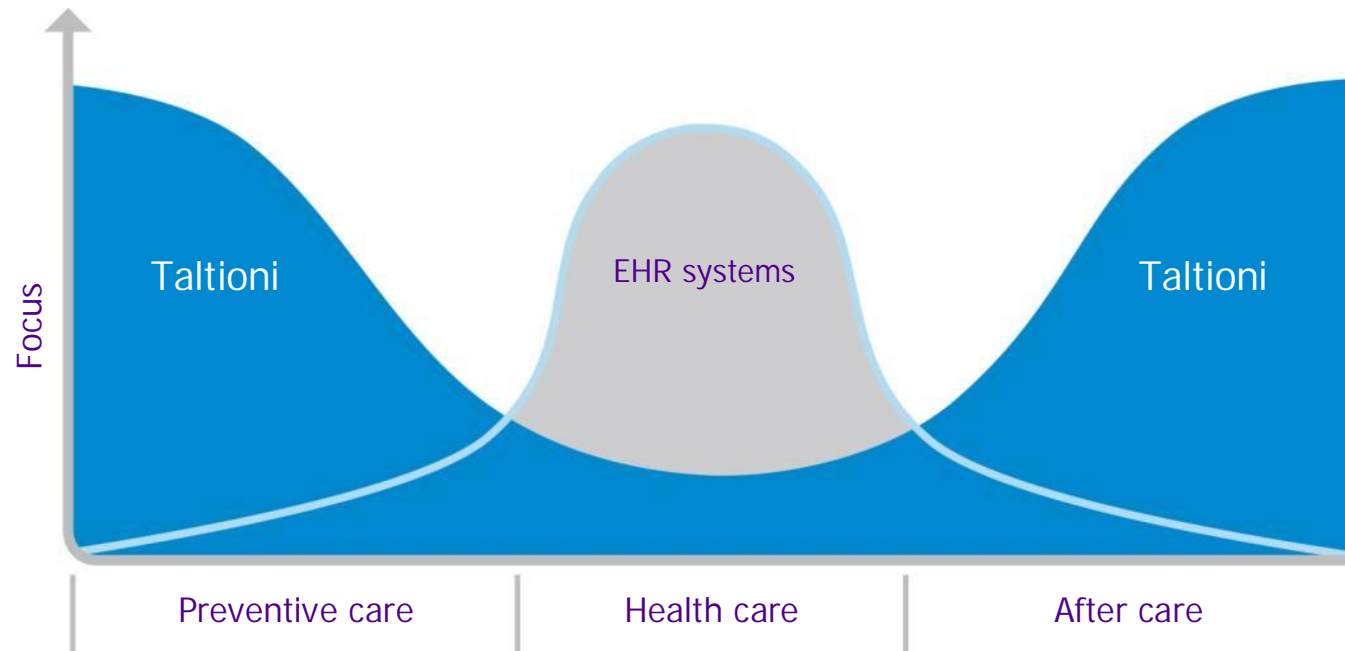
Social & cultural sustainability

Economic sustainability

Ecological sustainability



Empowering Citizens



Using advanced eHealth services citizens can take control of their well-being before poor health can cast its shadow.

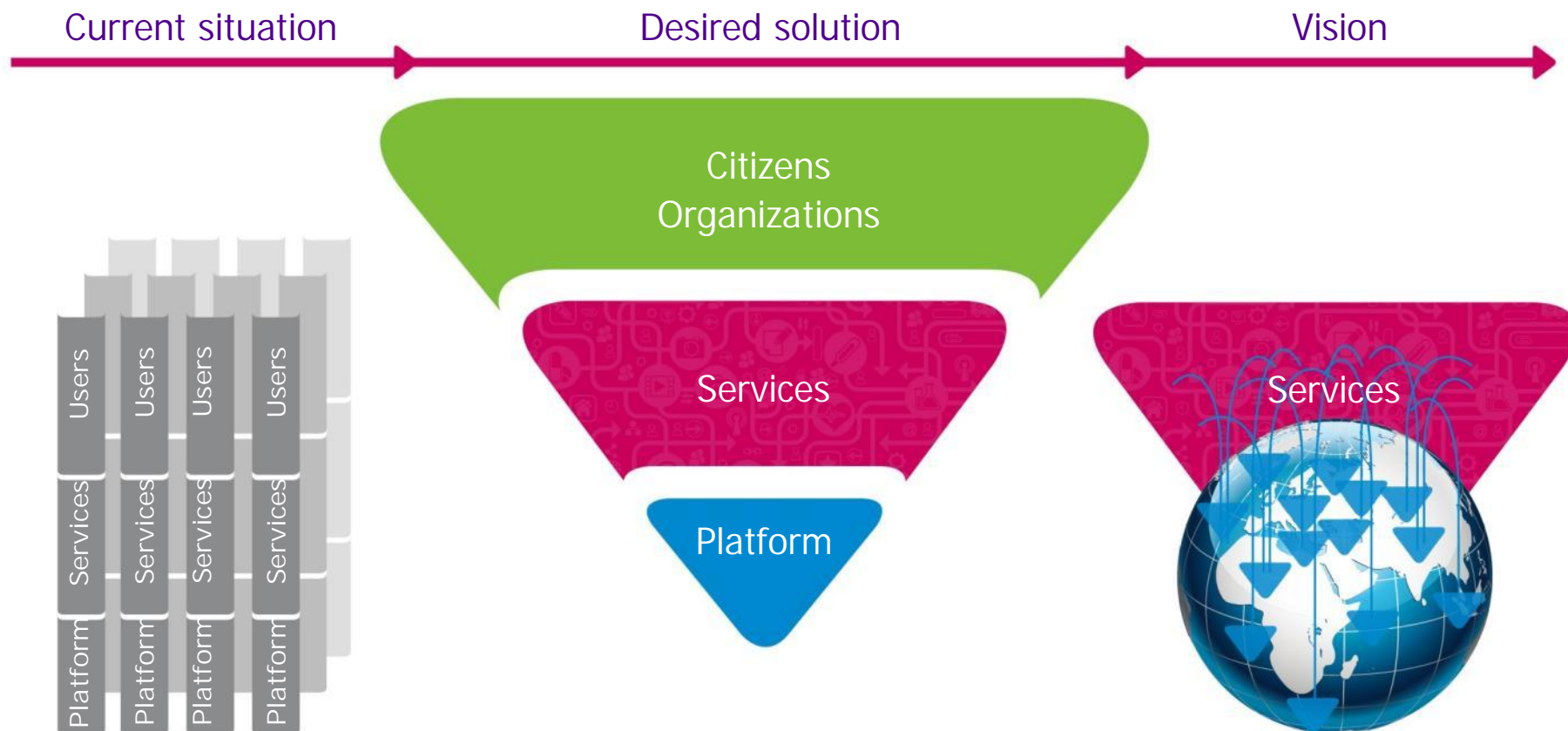
The variety of eHealth services enables citizens to take a holistic view of their own health.

Healthcare professionals can use the wealth of background data stored in Taltioni.

Taltioni enables a smooth information flow between professionals and systems.

Advanced eHealth services enable efficient and effective after treatment. Quick responses to changes in healing processes and personal treatment facilitate faster recovery.

From silos to ecosystem



From municipal, company, hospital district based silos...

...toward national solution, where rich database and growing eHealth ecosystem enables better services for citizens and organizations...

... and creates global opportunities for Finland and Finnish companies.

Sitra's Vision: Finland succeeds as a global pioneer in sustainable well-being



Thank you!

SITRA

Wharton School Publishing

FAST STRATEGY

HOW STRATEGIC
AGILITY WILL HELP
YOU STAY AHEAD
OF THE GAME

YVES DOZ & MIKKO KOSONEN

For more information

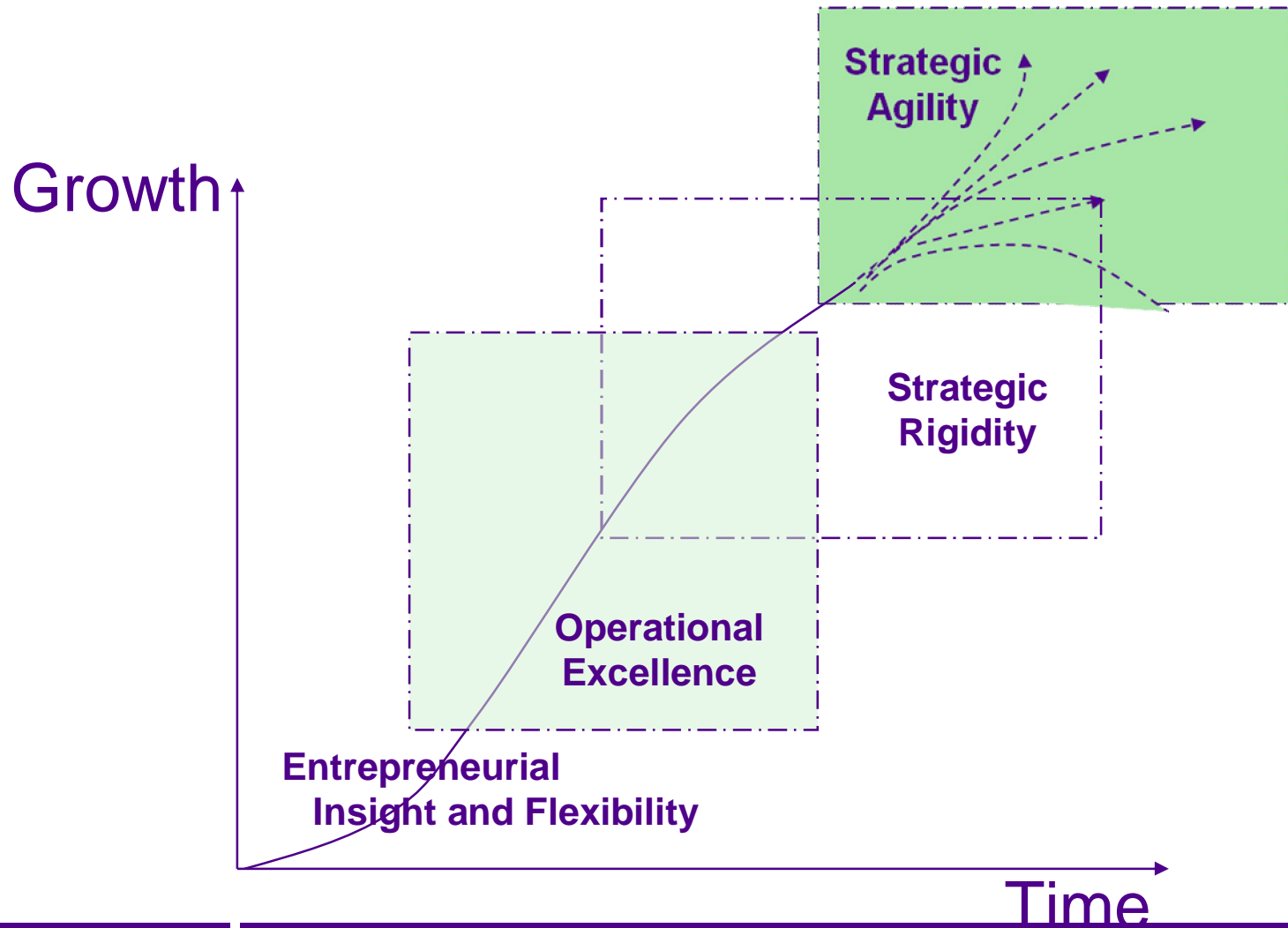
please contact:

E-mail: strategicagility@insead.edu

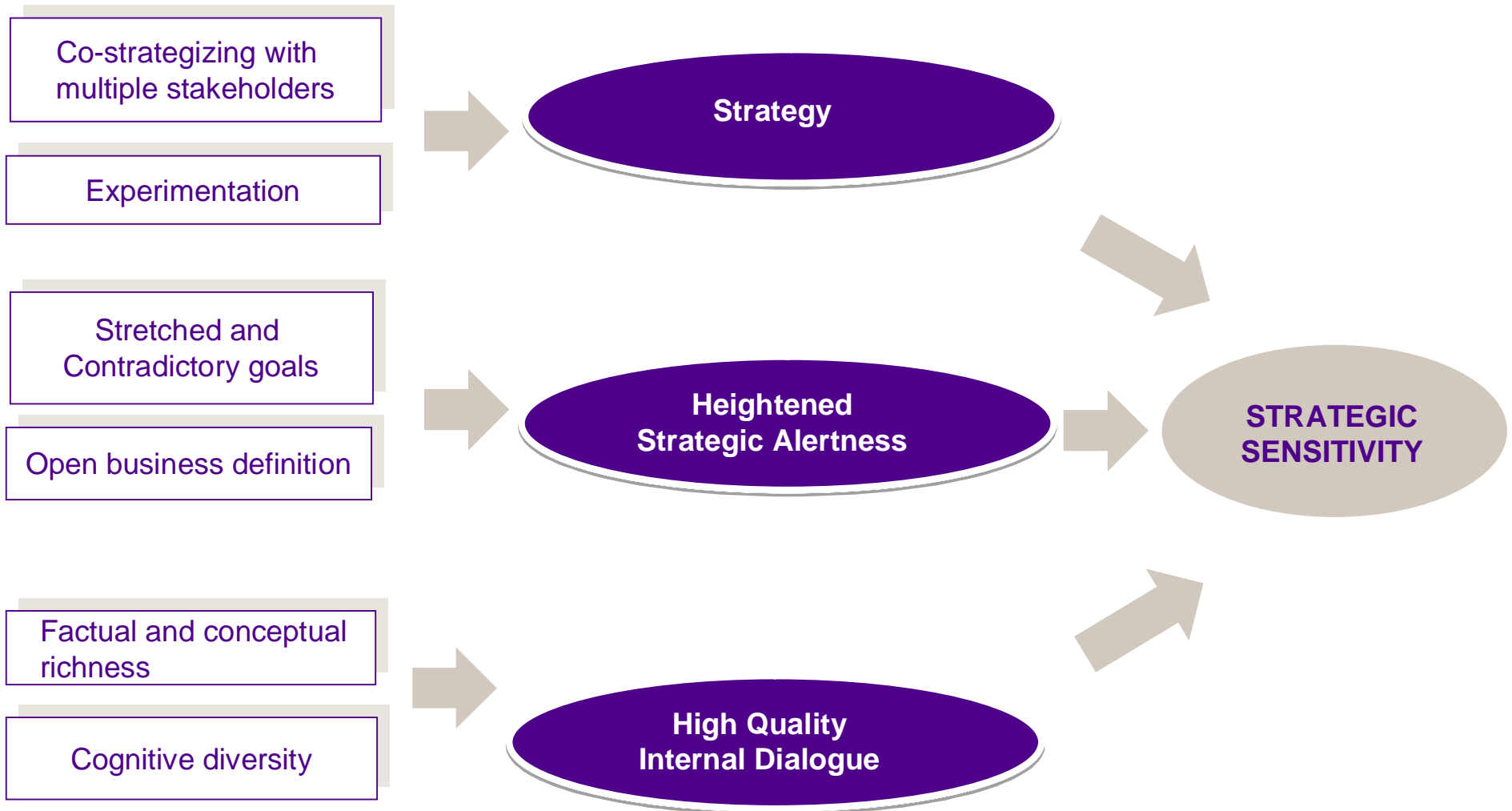
Taltioni Cooperative



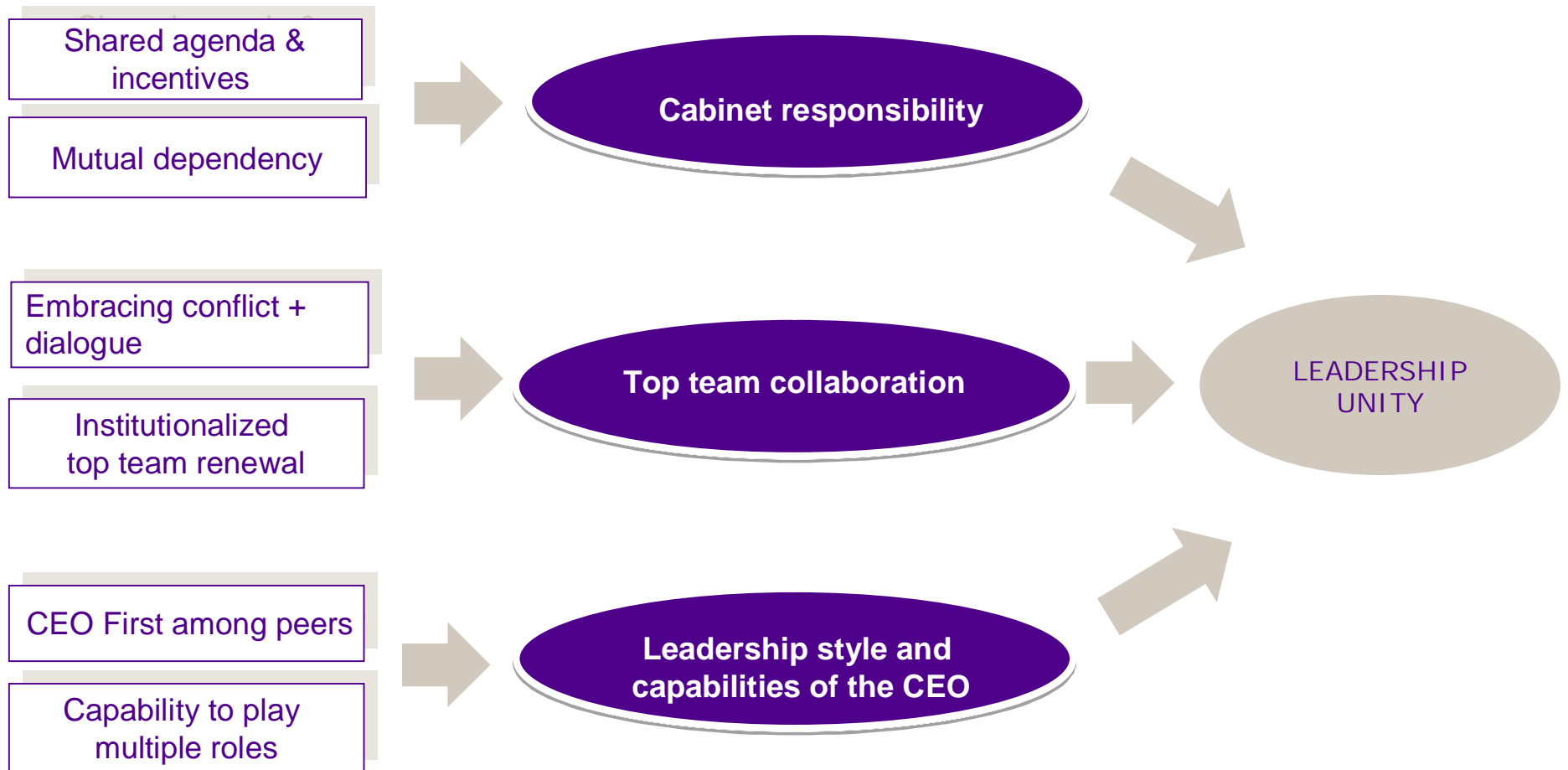
When is Strategic Agility most needed?



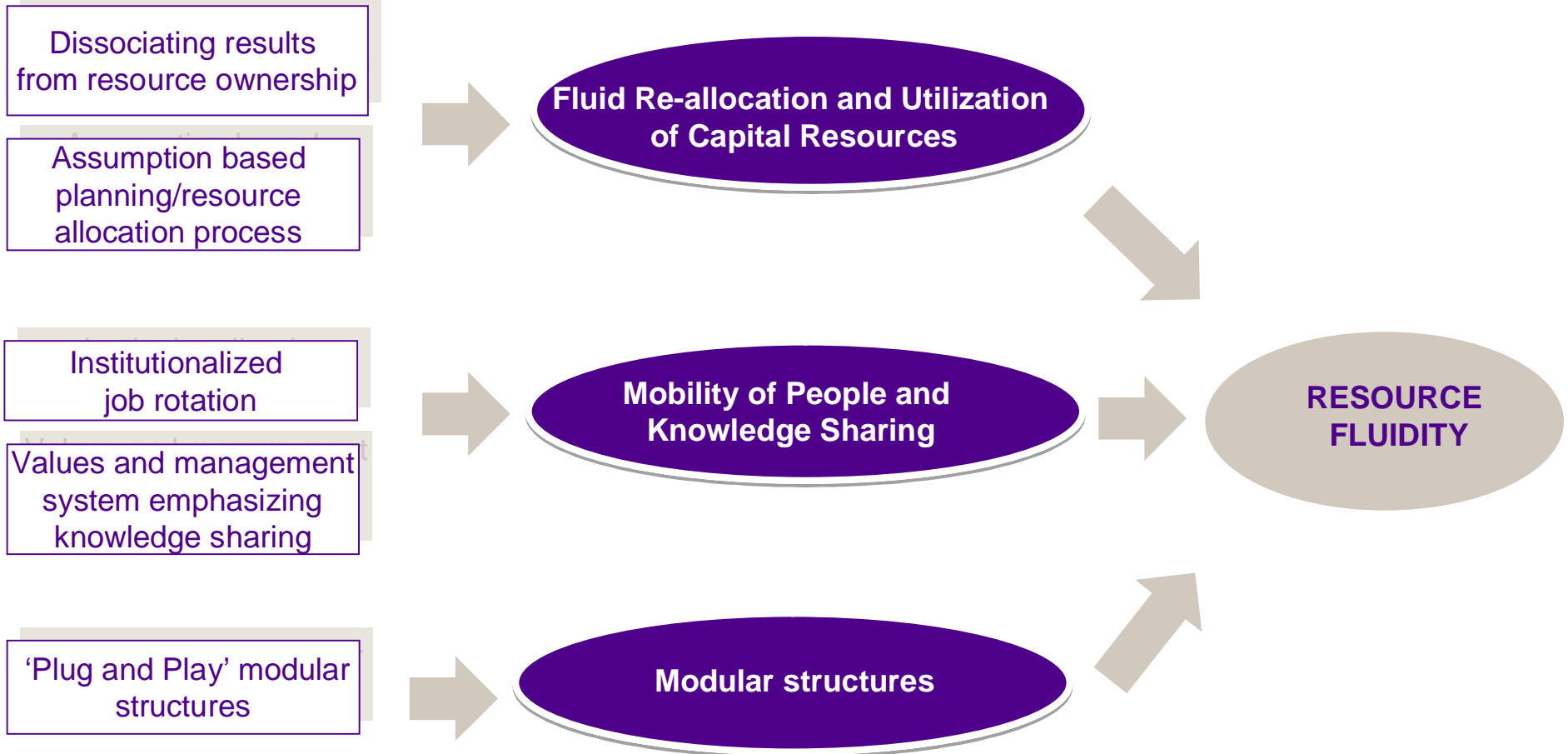
Drivers of Strategic Sensitivity



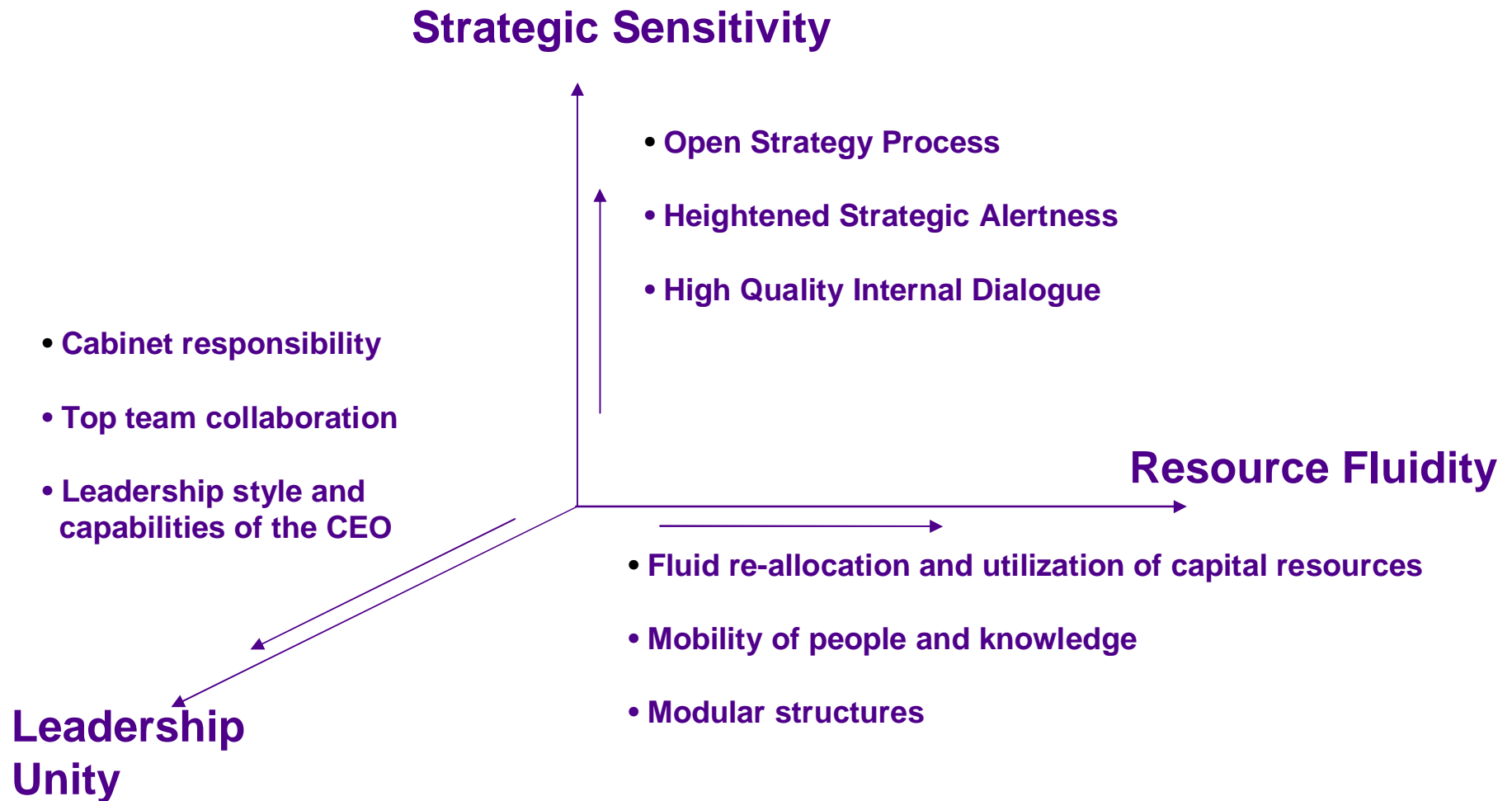
Drivers of Leadership Unity



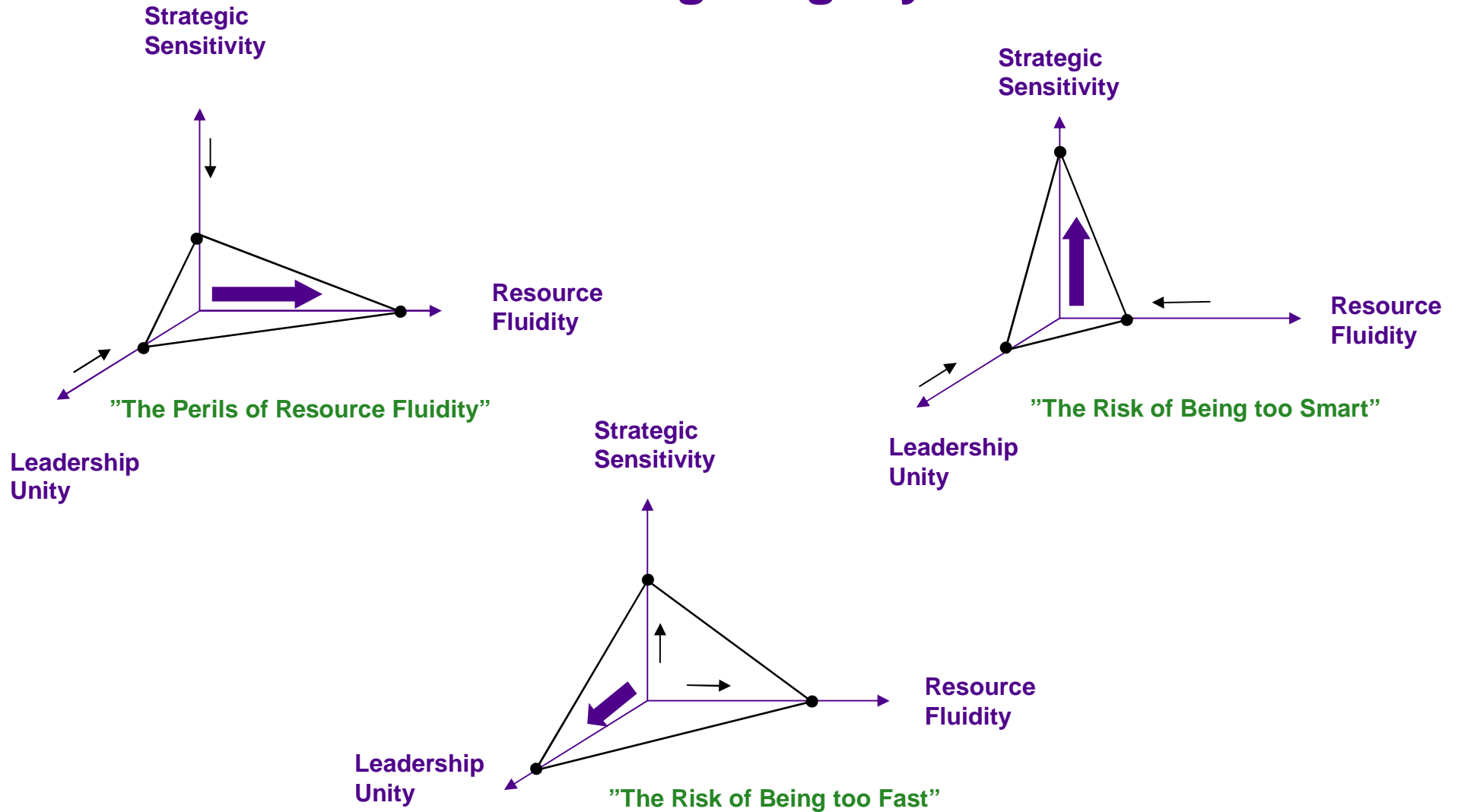
Drivers of Resource Fluidity



Key Capabilities enabling Strategic Agility



The Risks of 'Dead Ends' in developing Strategic Agility





Taltioni – the Finnish PHR Ecosystem



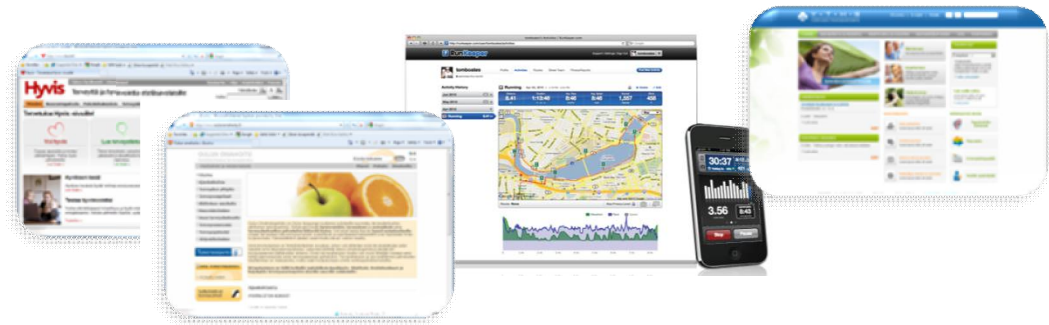
Anatomy of the Taltioni Ecosystem

Citizens see Taltioni as a range of services that they can use at the same time and which are all compatible. These services can utilize information stored by any Taltioni service.

Taltioni means that citizens are in charge of the data stored in the database - they own their own data. They can decide who or what service can access the data. Professionals can access the data using specific services designed for the purpose.



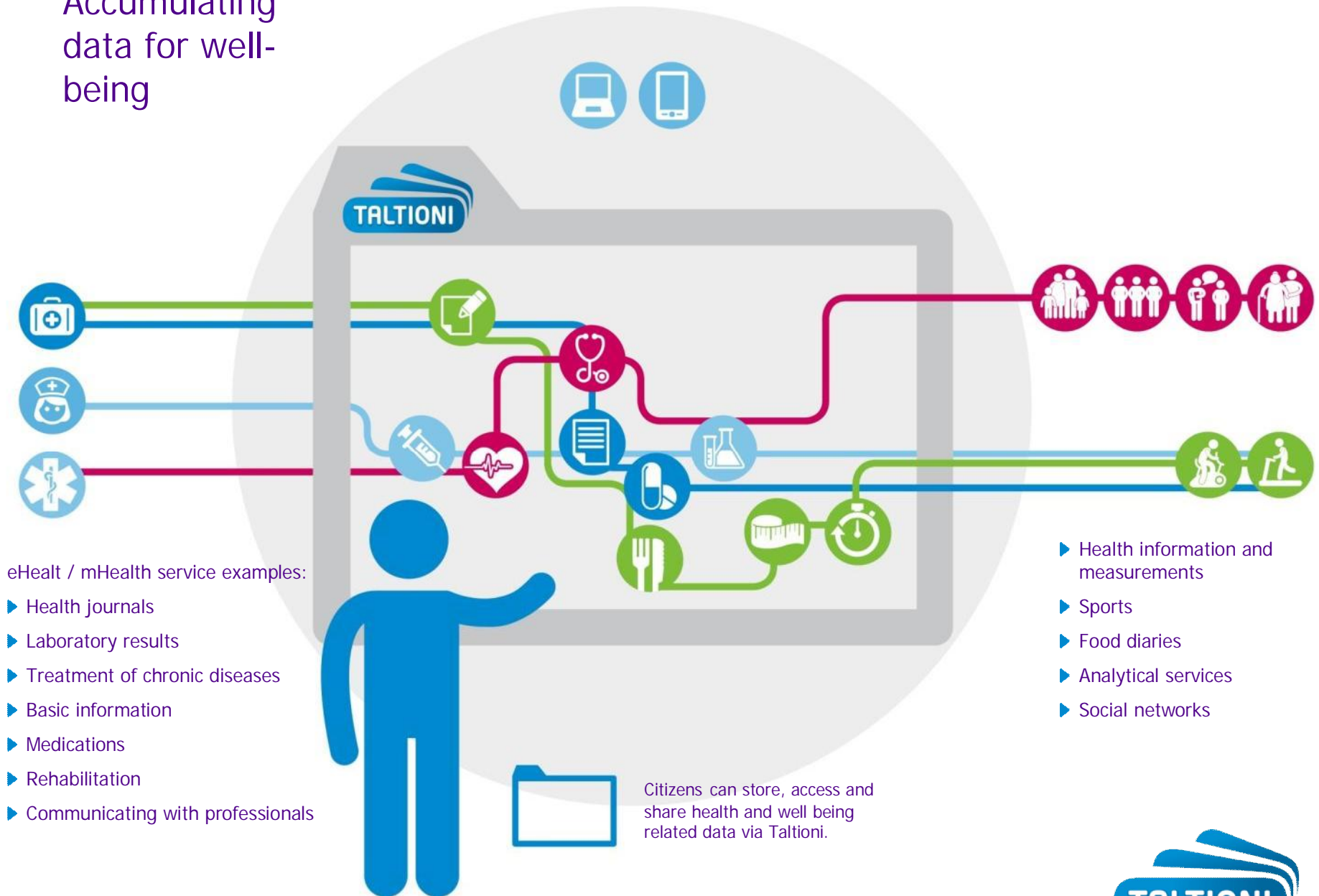
Services can be used via mobile, the web or any other UI. There might even be services with no UI. Taltioni does not restrict the way a service functions. Taltioni controls what data can be used and the datamodel/interface needed when accessing and storing data.



From a technical perspective Taltioni is a secure database for all Taltioni services. It also provides some common services for the services (for example, authentication). A service can store all or part of its data on Taltioni.



Accumulating data for well-being



eHealth / mHealth service examples:

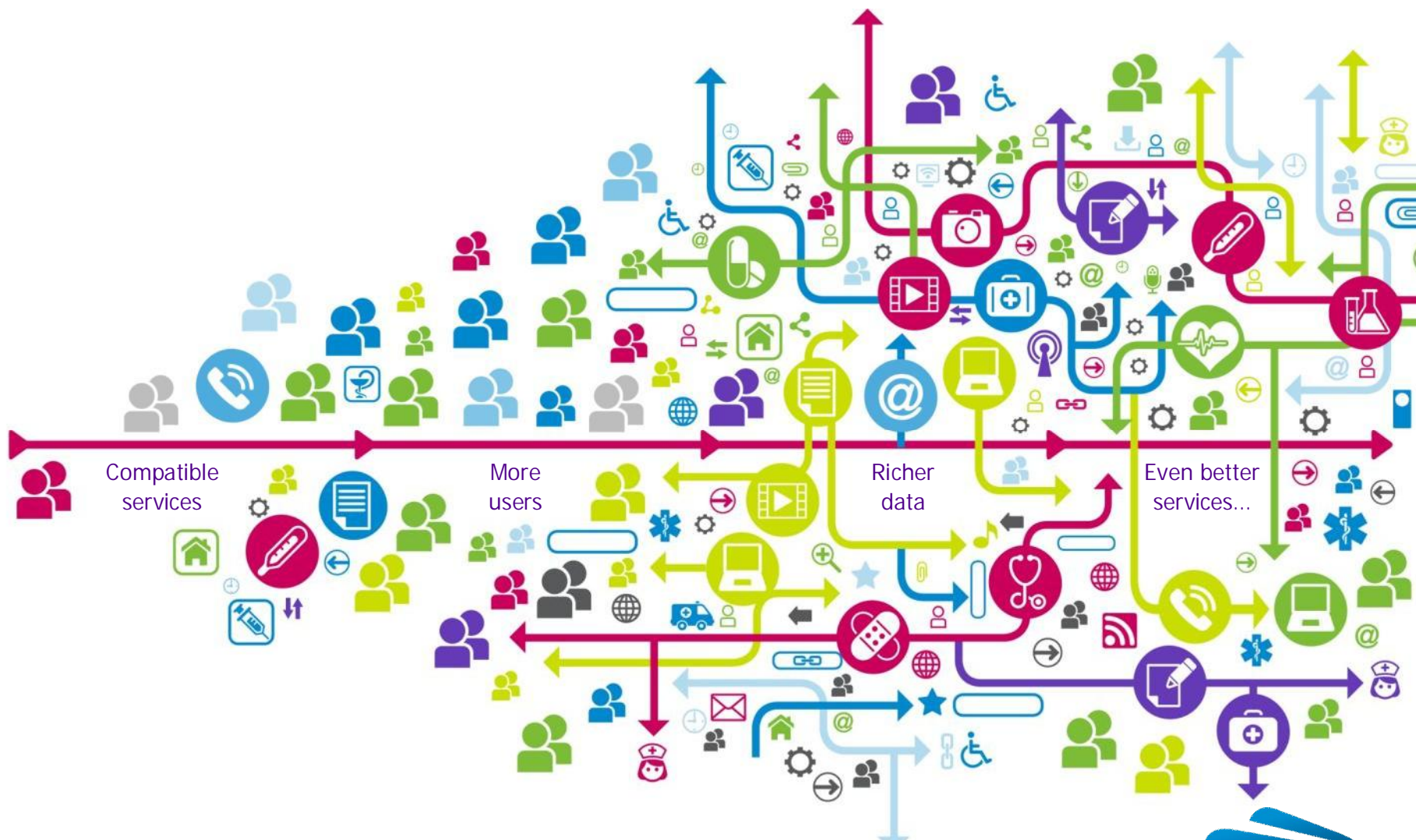
- ▶ Health journals
- ▶ Laboratory results
- ▶ Treatment of chronic diseases
- ▶ Basic information
- ▶ Medications
- ▶ Rehabilitation
- ▶ Communicating with professionals

- ▶ Health information and measurements
- ▶ Sports
- ▶ Food diaries
- ▶ Analytical services
- ▶ Social networks

Citizens can store, access and share health and well being related data via Taltioni.

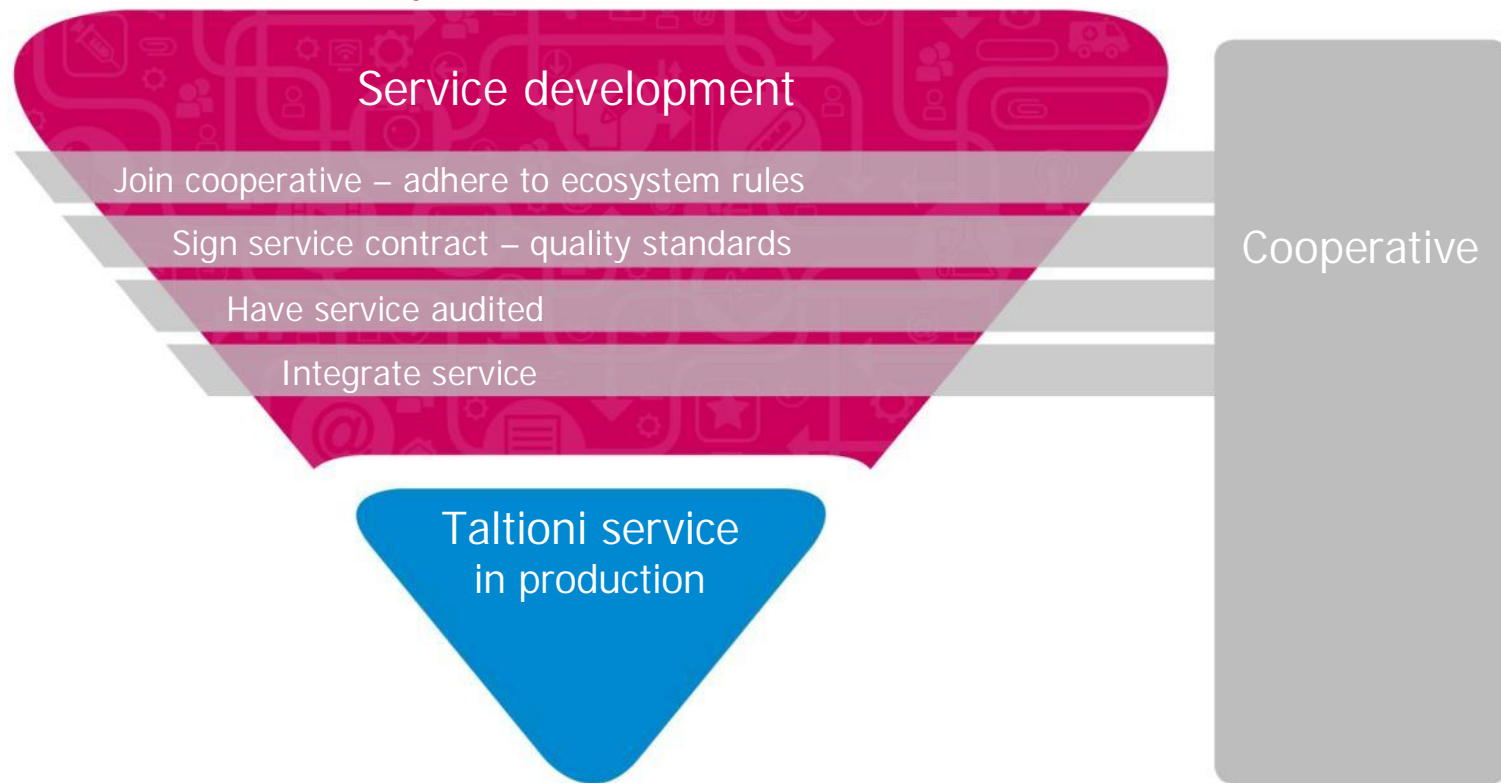


Snowball Effect

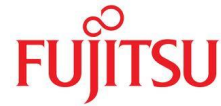


From paper to Taltioni

A concept or existing service not compatible with Taltioni



Taltioni Cooperative Members

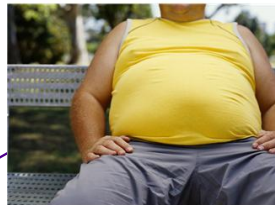


23.5.2012

Taltioni Cooperative Responsibilities

- Platform maintenance and development
- Taltioni brand management
- Technical and content-related quality management
- Set up rules for ecosystem
- Blank agreements with different parties

Business model, example



Visits occupational healthcare and shows to doctor old lab result from different healthcare unit. Doctor recommends new lab test and more exercise. All data connects to Taltioni. Employer pays healthcare and use of ehealth service

Visits municipal healthcare center to treat chronic disease. Doctor see all history data and home monitoring results from Taltioni.

Buys gym card which includes electronic sport diary

Buys blood pressure monitoring device. Device includes service that sends values direct to Taltioni



5€/year



5€/year



5€/year



5€/year



Taltioni platform



Thank You!